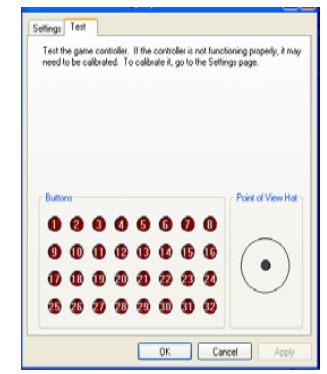
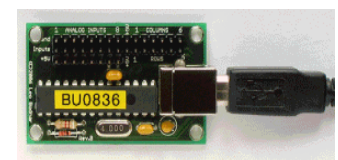


C = Column - R = Row (e.g. C5 = Column 5)
 S = Switch (e.g.S16 = Switch 16)



BOEING 737NG EFIS UNIT for PMDG

Built Using the BU0836 Joystick Controller
 Now with 2 bit Encoder Support
 CTS288 Rotary Encoders from Opencockpits

www.737ng.co.uk

ian@737ng.co.uk

Title BU0836 Encoder Connections for EFIS		
Author Ian P.Sisons www.737ng.co.uk		
File rd Settings\Owner\Desktop\CTS288_BU0836.dsn		Document 1
Revision 1.1	Date 6th March 2008	Sheets 1 of 1