



BOEING TYPE KNOBS

For Less than 2 Euro's each.

Ian P.Sissons September 2005

ian@737ng.co.uk

I wanted to try to achieve as much realism as possible on the MIP and Overhead before going on to build the remaining Cockpit Shell components and the final assembly. One big thing which my MIP was missing was the Large Style BOEING TYPE KNOBS for the AUTOBRAKE/N1 SET/SPD REF/DU SELECTORS and PANEL LIGHTING Switches. Looking around I found several outlets offering these at prices of up to 7 euro's each.

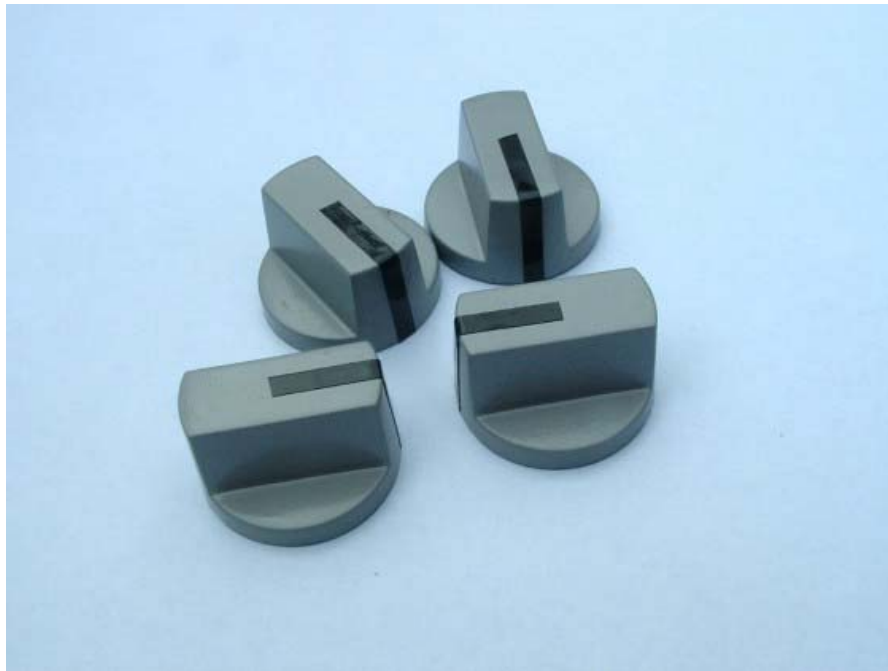
Now I may be a simple country lad, but how simple do these people think we are? I need 29 of these. That's $29 \times 7 = 203$ euro's (about GB£140). NO WAY!

So the simple answer is to make them myself....and this is how it's done.



I found these knobs at www.maplin.co.uk priced at 59p (83 cents) each. The MAPLIN Stock Code is FD76H. There was no shipping & handling because I ordered 30 combined with some other components and the S&H was free. If you are situated other than the UK, there will be an Electronics Supplier in your Country or even Neighbourhood who will have a similar knob. These are 23mm wide with a 6.4 (1/4") hub which is both splined and has a fixing screw for 'D' shafts..

1. First of all I cleaned them with a non-petroleum spirit to remove any moulding lubricant and dirt which may have been present.
2. Next give them a gentle rub with some fine 'Wet or Dry' abrasive paper to give the paint a good surface to stick to. You do not need to be too heavy, simply make sure that you dull down the gloss surface.
3. Your local Auto Shop will sell Acrylic High Build Grey Primer. Give the knobs several light coats making sure that you cover the whole area of the knob. Leave to dry overnight.



4. Following day, I used an Gloss Acrylic Car Paint to apply the colour. In the UK I found TETROSYL POLAR GREY to be the nearest colour to the actual knobs.
5. Apply several light coats of the Top Colour and allow to dry in between. I found that about 3 light coats with about an hour in between each coat gave me a very acceptable Flat finish with a nice gloss to it.
6. Again leave to dry overnight
7. Now here's the clever bit. There was no way I was going to hand paint 29 knobs with a black line, so this is how I achieved the finish I wanted. The black line is actually a plastic 'Pin Line' which is used on cars. Your local Auto shop will sell it. This is 2mm wide and is self adhesive. So simply stick the 'Pin Line' onto the knob and trim on the underside.
8. Because the paint is fresh, the plastic line will adhere completely to the knob and of course the adhesive will penetrate the paint to give a good bond.
9. I left my knobs to harden for about 3 days at room temperature before fitting them. I am well pleased with the result and hope this helps you out.

